

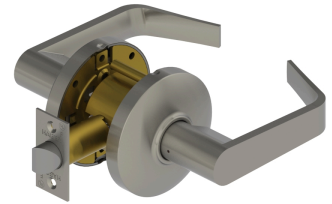


PRODUCT SPECIFICATIONS
For more information visit www.hagerco.com

3510 - Passage (F75)

Applications

Standard duty commercial



PRODUCT SPECIFICATIONS

Backsets:

2-3/4" (70mm)
2-3/8" (60mm)
3-3/4" (94mm)
5" (128mm)

Certifications:

BHMA Certified ANSI A156.2, Series 4000 Grade 2
ADA Compliant ANSI A117.1 Accessibility Code
UL/cUL Listed for all functions up to 3 hours "A" label single doors
ANSI A250.13 Severe Windstorm ComponentUL10C Positive
Pressure Rated

Door Thickness:

1-3/8" - 2" (35 mm - 51 mm)

Exposed Trim:

Wrought Brass, Bronze, and Stainless Steel

Finishes:

US3, US4, US10, US10B, US26 and US26D
Anti-Microbial coating (US26D finish only)

Functions:

Passage (F75)

Latchbolt Type:

1/2" (13 mm) throw, stainless steel
1-1/8" x 2-1/4" (29 mm x 57 mm) faceplate for 2-3/4" (70 mm)
backset
1" x 2-1/4" (25 mm x 57 mm) faceplate for 2-3/8" (60 mm) backset

Lever Options:

Archer, August and Withnell

Lock Chassis:

Heavy gauge steel, zinc dichromated for corrosion resistance. Thru-posts are removable. Failure to install thru-posts and screws voids BHMA certification, UL rating, and warranty

Notes:

No exposed mounting screws
Non-handed

Options:

Lead Lining
Tactile Warning
Split Finish

Rose Diameter:

3-11/32" (85 mm)

Strikes:

1-1/4" x 4-7/8" (32 mm x 124 mm) ASA strike
Optional strikes available

Warranty:
Lifetime