



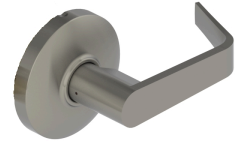
PRODUCT SPECIFICATIONS

For more information visit www.hagerco.com

3527 - Double Dummy

Applications

Standard Duty Commercial



PRODUCT SPECIFICATIONS

Door Thickness:

1-3/8" - 2" (35 mm - 51 mm)

Exposed Trim:

Wrought brass, bronze, and stainless steel
Lever is zinc based, plated to match BHMA symbols

Finishes:

US3, US4, US10, US10B, US26 and US26D
Anti-Microbial coating (US26D finish only)

Functions:

Double Dummy

Lever Options:

Archer, August and Withnell

Notes:

No exposed mounting screws
Non-handed

Rose Diameter:

3-11/32" (85 mm)

Warranty:

Lifetime