

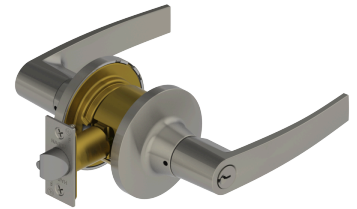


PRODUCT SPECIFICATIONS
For more information visit www.hagerco.com

3680 - Storeroom (F86)

Applications

Medium Duty Commercial
Heavy Duty Residential



PRODUCT SPECIFICATIONS

Backsets:

Adjustable 2-3/8" - 2-3/4" (60mm - 70mm)

Warranty:

Five-Year

Certifications:

ADA Compliant ANSI A117.1 Accessibility Code
UL/cUL Listed for all functions up to 3 hours "A" label single doors
UL10C Positive Pressure Rated
BHMA Certified ANSI A156.2, Series 4000, Grade 2

Cylinders/Cores:

Keyed Different - standard
Cylinder drilled 6 pin, Keyed 5 pin - standard
Other Keying options, including 6 pin keyed, available from factory
Zero bit cylinders will be 6 pin keyed
SFIC uncombined or combined, brass 6 pin or 7 pin cores sold separately

Door Thickness:

1-3/8" - 1-3/4" (35 mm - 45 mm)

Exposed Trim:

Rose - Wrought brass, bronze, and stainless steel
Lever - Zinc based, plated to match BHMA symbols

Finishes:

US3, US4, US10B, US26, US26D

Functions:

Storeroom (F86)

Keyway:

Schlage C - Standard, other keyways optional

Latchbolt Type:

1/2" (13 mm) throw, stainless steel
1" x 2-1/4" (25 mm x 57 mm) faceplate
Deadlocking latchbolt prevents manipulation when door is closed
Square corner faceplate standard, round corner optional

Lever Options:

Archer, August and Withnell

Notes:

No exposed mounting screws
Non-handed

Options:

Split Finish

Rose Diameter:

2-15/16" (75 mm)

Strikes:

1-1/4" x 4-7/8" (32 mm x 124 mm) ASA strike
Optional strikes available