



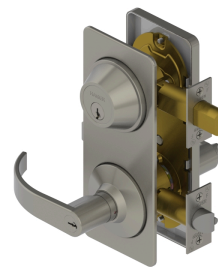
PRODUCT SPECIFICATIONS

For more information visit www.hagerco.com

3753 - Entry Double Locking (F97)

Applications

Standard Duty Commercial
Heavy Duty Residential



PRODUCT SPECIFICATIONS

Backsets:

2-3/4" (70mm)
2-3/8" (60mm)

Certifications:

ADA Compliant ANSI A117.1 Accessibility Code
UL/cUL Listed for all functions up to 3 hours "A" label single doors
UL10C Positive Pressure Rated
BHMA Certified ANSI A156.12, Grade 2

CTC Length:

4" (102 mm)

Cylinders/Cores:

Keyed Different - standard
Cylinder drilled 6 pin, Keyed 5 pin - standard
Other Keying options, including 6 pin keyed, available from factory
Zero bit cylinders will be 6 pin keyed
SFIC uncombined or combined, brass 6 pin or 7 pin cores sold separately

Deadbolt:

1" (25 mm) throw, brass with concealed hardened steel roller
1-1/8" x 2-1/4" (29 mm x 57 mm) faceplate for 2-3/4" (70 mm) backset
1" x 2-1/4" (25 mm x 57 mm) faceplate for 2-3/8" (65 mm) backset

Door Thickness:

1-3/8" - 1-3/4" (35 mm - 45 mm) - Standard
2" (52 mm) - Optional

Escutcheons:

Inside - 3-1/16" x 7-15/16" x 3/8" (78 mm x 202 mm x 10mm);
Outside - 3-5/16" x 7-15/16" x 3/8" (84 mm x 202 mm x 10mm)

Exposed Trim:

Wrought brass, bronze, and stainless steel
Lever is zinc based, plated to match BHMA symbols

Finishes:

US3, US4, US10B, US26, US26D

Functions:

53 - Double Locking Entry

Keyway:

Schlage C - Standard, other keyways optional

Latchbolt Type:

1/2" (13 mm) throw, stainless steel
1-1/8" x 2-1/4" (29 mm x 57 mm) faceplate for 2-3/4" (70 mm) backset
1" x 2-1/4" (25 mm x 57 mm) faceplate for 2-3/8" (65 mm) backset
Deadlocking latchbolt prevents manipulation when door is closed

Lever Options:

Archer, August and Withnell

Lock Chassis:

Heavy gauge steel, zinc dichromated for corrosion resistance.

Notes:

Non-handed

Rose Diameter:

2-1/2" (63 mm)

Strikes:

1-1/8" x 2-3/4" (29 mm x 70 mm) no-lip deadbolt strike - Standard
1-1/8" x 2-3/4" (29 mm x 70 mm) Tee Strike - Standard

Warranty:

Lifetime