

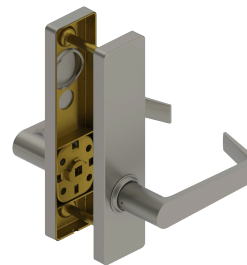


PRODUCT SPECIFICATIONS
For more information visit www.hagerco.com

3827E - Double Dummy

Applications

Heavy Duty Commercial
Industrial
Institutional



PRODUCT SPECIFICATIONS

Door Thickness:

1-3/4" - 2-1/2" (45 mm - 64 mm)

Escutcheons:

1-15/16" x 8" (50 mm x 203 mm)

Exposed Trim:

Cast Zinc -Standard
Cast Stainless Steel - Optional for Withnell (WTS) and William (WLS) only

Finishes:

US3, US4, US10B, US15, US26, US26D and US32D*
*32D look on a cast zinc lever
*Withnell and William are the only lever options available in both zinc and stainless steel. For stainless steel, reference Withnell (WTS) or William (WLS) at the time of order
US3, US4 and US26 subject to extended lead time

Functions:

Double Dummy

Lever Options:

Archer, August, Charles, Johnston, Joshua, Louis, Warren, William and Withnell

Notes:

No exposed mounting screws
Concealed thru-bolts

Warranty:

Lifetime