

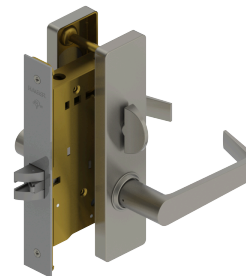


PRODUCT SPECIFICATIONS
For more information visit www.hagerco.com

3844E - Privacy w/ Cointurn (F22)

Applications

Heavy Duty Commercial
Industrial
Institutional



PRODUCT SPECIFICATIONS

Backsets:

2-3/4" (70mm)

Certifications:

ADA Compliant ANSI A117.1 Accessibility Code
UL/cUL Listed for all functions up to 3 hours "A" label single doors
UL10C Positive Pressure Rated
BHMA Certified ANSI A156.13, Series 1000, Grade 1

CTC Length:

3-5/8" (92mm)

Door Thickness:

1-3/4" - 2" (45 mm - 51 mm)

Please specify door thickness if greater than 1-3/4" (45 mm) or the door has an offset prep

Escutcheons:

1-15/16" x 8" (50 mm x 203 mm)

Exposed Trim:

Cast Zinc - Standard
Cast Stainless Steel - Optional for Withnell (WTS) or William (WLS) only

Finishes:

US3, US4, US10B, US26, US26D, US32D*

*US32D look on a cast zinc lever

Withnell and William are the only lever options available in both zinc and stainless steel

For stainless steel, reference Withnell (WTS) or William (WLS) at the time of order

US3, US4 and US26 subject to extended lead time

Functions:

Privacy w/ Cointurn (F22)

Latchbolt Type:

3/4" (19 mm) throw with anti-friction tongue, all stainless steel

Lever Options:

Archer, August, Charles, Johnston, Joshua, Louis, Warren, William and Withnell

Lock Chassis:

4-5/16" x 6" x 1" (110 mm x 152 mm x 25 mm)

Notes:

No exposed mounting screws
Concealed thru-bolts
Body is easily field reversible (shipped LHR by default)
Self adjusting case for beveled doors

Options:

Tactile Warning
Lead Lining
Split Finish

Factory Handing Available (if specified)

Strikes:

1-1/4" x 4-7/8" (32 mm x 124 mm) ASA strike
Optional strikes available

Warranty:

Lifetime