

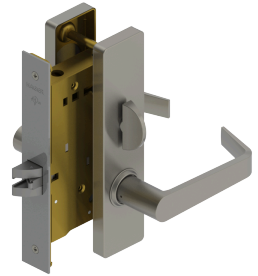


PRODUCT SPECIFICATIONS  
For more information visit [www.hagerco.com](http://www.hagerco.com)

## 3896E - Privacy w/ Indicator (F22)

### Applications

Heavy Duty Commercial  
Industrial  
Institutional



### PRODUCT SPECIFICATIONS

#### Backsets:

2-3/4" (70mm)

#### Certifications:

ADA Compliant ANSI A117.1 Accessibility Code  
UL/cUL Listed for all functions up to 3 hours "A" label single doors  
UL10C Positive Pressure Rated  
BHMA Certified ANSI A156.13, Series 1000, Grade 1

#### CTC Length:

3-5/8" (92mm)

#### Door Thickness:

1-3/4" - 2" (45 mm - 51 mm)

Please specify door thickness if greater than 1-3/4" (45 mm) or the door has an offset prep

#### Escutcheons:

1-15/16" x 8" (50 mm x 203 mm)

#### Exposed Trim:

Cast Zinc - Standard  
Cast Stainless Steel - Optional for Withnell (WTS) and William (WLS) only

#### Finishes:

US3, US4, US10B, US26, US26D, US32D\*

\*US32D look on a cast zinc lever

Withnell or William are the only lever options available in both zinc and stainless steel

For stainless steel, reference Withnell (WTS) or William (WLS) at the time of order

US3, US4 and US26 subject to extended lead time

#### Functions:

Privacy w/ Indicator (F22)

#### Latchbolt Type:

3/4" (19 mm) throw with anti-friction tongue, all stainless steel

#### Lever Options:

Archer, August, Charles, Johnston, Joshua, Louis, Warren, William and Withnell

#### Lock Chassis:

4-5/16" x 6" x 1" (110 mm x 152 mm x 25 mm)

#### Notes:

Exterior indicator housing displays "Occupied" or "Vacant"

Emergency release on exterior side via supplied key

No exposed mounting screws

Concealed thru-bolts

Body is easily field reversible (shipped LHR by default)

Self adjusting case for beveled doors

#### Options:

Tactile Warning

#### Lead Lining

Split Finish

Factory Handing Available (if specified)

#### Strikes:

1-1/4" x 4-7/8" (32 mm x 124 mm) ASA strike

Optional strikes available

#### Warranty:

Lifetime