

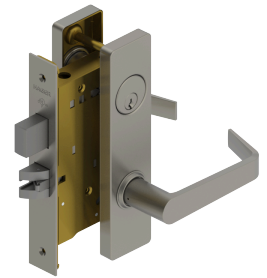


PRODUCT SPECIFICATIONS  
For more information visit [www.hagerco.com](http://www.hagerco.com)

## 3857E - Intruder Classroom w/ Deadbolt (F33)

### Applications

Heavy Duty Commercial  
Industrial  
Institutional



### PRODUCT SPECIFICATIONS

#### Backsets:

2-3/4" (70mm)

#### Certifications:

ADA Compliant ANSI A117.1 Accessibility Code  
UL/cUL Listed for all functions up to 3 hours "A" label single doors  
UL10C Positive Pressure Rated  
BHMA Certified ANSI A156.13, Series 1000, Grade 1

#### CTC Length:

3-5/8" (92mm)

#### Cylinders/Cores:

Brass - keyed different - Schlage C keyway - standard  
Drilled 6-Pin, Keyed 5-Pin - standard  
Other keying options, including keyed 6-pin, available from factory  
Zero bit cylinders will be 6 pin keyed - standard  
SFIC mortise housings available  
SFIC uncombined or combined, brass 6- or 7-pin cores sold separately - standard  
LFIC mortise housings available  
LFIC zero bitted or combined, brass 6-pin sold separately - standard. Schlage C keyway only.  
Schlage "L" cam is used standard on Hager mortise locks

#### Deadbolt:

1" (25 mm) throw - stainless steel

#### Door Thickness:

1-3/4" - 2-1/2" (45 mm - 64 mm)  
Please specify door thickness if greater than 1-3/4" (45 mm) or the door has an offset prep

#### Escutcheons:

1-15/16" x 8" (50 mm x 203 mm)

#### Exposed Trim:

Cast Zinc -Standard  
Cast Stainless Steel - Optional for Withnell (WTS) and William (WLS) only

#### Finishes:

US3, US4, US10B, US26, US26D, US32D\*  
\*US32D look on a cast zinc lever  
Withnell and William are the only lever options available in both zinc and stainless steel  
For stainless steel, reference Withnell (WTS) or William (WLS) at the time of order  
US3, US4 and US26 subject to extended lead time

#### Functions:

Intruder Classroom w/ Deadbolt (F33)

#### Keyway:

Schlage C - Standard, other keyways optional

#### Latchbolt Type:

3/4" (19 mm) throw with anti-friction tongue, all stainless steel

#### Lever Options:

Archer, August, Charles, Johnston, Joshua, Louis, Warren, William and Withnell

#### Lock Chassis:

4-5/16" x 6" x 1" (110 mm x 152 mm x 25 mm)

#### Notes:

No exposed mounting screws  
Concealed thru-bolts  
Body is easily field reversible (shipped LHR by default)  
Self adjusting case for beveled doors

#### Options:

Tactile Warning  
Lead Lining  
Split Finish  
Factory Handing Available (if specified)

#### Strikes:

1-1/4" x 4-7/8" (32 mm x 124 mm) ASA strike  
Optional strikes available

#### Warranty:

Lifetime