



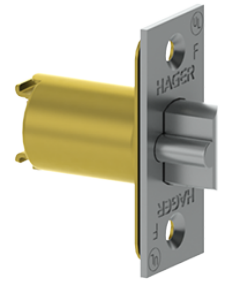
PRODUCT SPECIFICATIONS

For more information visit www.hagerco.com

3950 - 2-3/8" BS Dead Latch

2-3/8" (60 mm) Latchbolt - Dead Latch

Applications



PRODUCT SPECIFICATIONS

Faceplate Type:

Square corner and round corner available

Finishes:

US3, US4, US10B, US26 and US26D

Notes:

1" x 2-1/4" (25mm x 57mm) Faceplate

For use with 25 function and all keyed functions other than corridor