



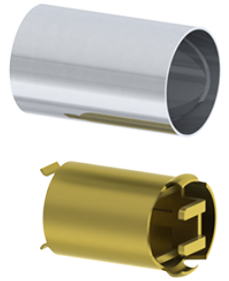
PRODUCT SPECIFICATIONS

For more information visit www.hagerco.com

3916 - 3-3/4" BS Extension Link

3-3/4" (95 mm) Backset Extension Link

Applications



PRODUCT SPECIFICATIONS

Notes:

Must be used with 2-3/8" backset latchbolt to achieve 3-3/4" total backset.