

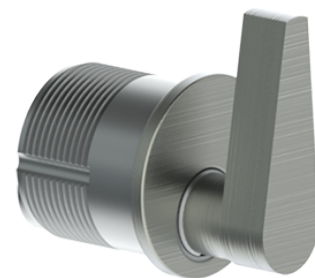


PRODUCT SPECIFICATIONS
For more information visit www.hagerco.com

3905 - Mortise ADA Turn Knob

ADA Turn Knob Mortise Cylinder

Applications



PRODUCT SPECIFICATIONS

Finishes:

US3, US4, US10B, US26 and US26D

Notes:

Available Lengths: 1-1/8" (29mm) and 1-1/4" (32 mm)

Shipped with Schlage L Cam attached unless specified otherwise

Machined from solid brass