



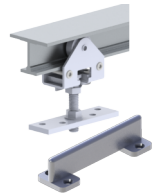
## PRODUCT SPECIFICATIONS

For more information visit [www.hagerco.com](http://www.hagerco.com)

# 9110-72

## Aluminum I-Beam Track and Hardware Packaged Set

### Applications



## PRODUCT SPECIFICATIONS

Case Quantity:  
5

Conforms To:  
ANSI A156.14/Type: D8681, D8711

Includes:  
9101 track and 9109 parts bag (use two tracks for by-pass)

Material:  
Extruded aluminum

Maximum Door Weight:  
175 lbs

Notes:  
For doors 1" (25.4 mm) thick or greater,  
  
Up to 175 pounds per door,  
  
Track is extruded aluminum jump-proof style with "I" beam track,  
  
Hangers have 1" (25.4 mm) diameter wheels,  
  
Two (2) pieces required per by pass

Packaged Sets:  
6' (1839 mm) Pocket Set for one 3'0" (914 mm) door