



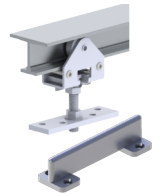
PRODUCT SPECIFICATIONS

For more information visit www.hagerco.com

9110-84

Aluminum I-Beam Track and Hardware Packaged Set

Applications



PRODUCT SPECIFICATIONS

Case Quantity:
5

Conforms To:
ANSI A156.14/Type: D8681, D8711

Includes:
9101 track and 9109 parts bag (use two tracks for by-pass)

Material:
Extruded aluminum

Maximum Door Weight:
175 lbs

Notes:
For doors 1" (25.4 mm) thick or greater

Up to 175 pounds per door

Track is extruded aluminum jump-proof style with "I" beam track

Hangers have 1" (25.4 mm) diameter wheels,

Two (2) pieces required per by pass

Packaged Sets:
7' (2134 mm) Pocket Set for one 3'6" (1067 mm) door