

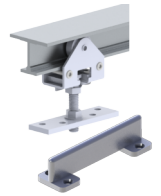


## PRODUCT SPECIFICATIONS

For more information visit [www.hagerco.com](http://www.hagerco.com)

# 9110-120

## Applications



## PRODUCT SPECIFICATIONS

Case Quantity:  
5

Conforms To:  
ANSI A156.14/Type: D8681, D8711

Includes:  
9101 track and 9109 parts bag (use two tracks for by-pass)

Material:  
Extruded aluminum

Maximum Door Weight:  
175 lbs

Packaged Sets:  
10' (3048 mm) Pocket Set for one 5'0" (1529 mm) door

Product Name:  
Aluminum I-Beam Track and Hardware Packaged Set

Website Note:  
For doors 1" (25.4 mm) thick or greater, Up to 175 pounds per door,  
Track is extruded aluminum jump-proof style with "I" beam track,  
Hangers have 1" (25.4 mm) diameter wheels, Compares to Grant  
1210/1230 Series, To (2) pieces required per by pass