

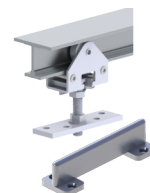


## PRODUCT SPECIFICATIONS

For more information visit [www.hagerco.com](http://www.hagerco.com)

# 9130-96

## Applications



## PRODUCT SPECIFICATIONS

**Case Quantity:**

5

**Door Clearance:**

Clearance between door bottom and top of track must be 5/8" (16 mm) minimum to 1" (25.4 mm) maximum

**Material:**

Aluminum

**Packaged Sets:**

8' (2438 mm) By-Pass Set - For one 4'0" (1219 mm) door

**Parts Bag:**

One (1) 9129 Parts Bag containing two (2) 9105 4-Wheel Hangers and one (1) 9115 Floor Guide

**Product Name:**

Aluminum I-Beam Track and Hardware Packaged Set

**Website Note:**

Two (2) pieces required per by pass