



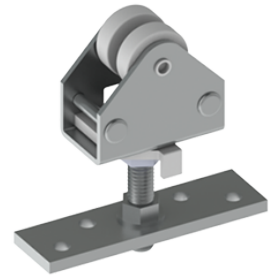
## PRODUCT SPECIFICATIONS

For more information visit [www.hagerco.com](http://www.hagerco.com)

# 9102 - 2-Wheel Hanger

2 Wheel Hanger - For use with 9101 track

## Applications



## PRODUCT SPECIFICATIONS

### Bolt:

3/8" (10 mm) x 2-5/16" (59 mm)

Bolt not same as 9105

### Case Quantity:

20

### Hanger Height:

1-13/16" (46 mm)

1-13/16" (46 mm) x 2" (51 mm) x 1-1/8" (29 mm)

### Hanger Length:

2" (51 mm)

1-13/16" (46 mm) x 2" (51 mm) x 1-1/8" (29 mm)

### Hanger Width:

1-1/8" (29 mm)

1-13/16" (46 mm) x 2" (51 mm) x 1-1/8" (29 mm)

### Material:

Zinc Plated Steel

### Maximum Door Weight:

175 lbs

### Notes:

Use with 9101 track, with doors weighing up to 175 lbs (79 kg)

1 each, order 2 per door

### Packaging:

1 each, order 2 per door

### Related Products:

9101 track

### Wheels:

Nylon with Steel ball bearings