

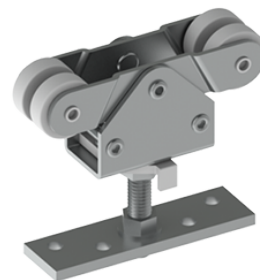


PRODUCT SPECIFICATIONS
For more information visit www.hagerco.com

9105 - 4-Wheel Hanger

4 Wheel Hanger - For use with 9101 track

Applications



PRODUCT SPECIFICATIONS

Bolt:

3/8" (10 mm) x 2-5/16" (59 mm)

Case Quantity:

40

Hanger Height:

4" (102 mm) x 2" (51 mm) x 1-3/4" (45 mm)

Hanger Length:

4" (102 mm) x 2" (51 mm) x 1-3/4" (45 mm)

Hanger Width:

4" (102 mm) x 2" (51 mm) x 1-3/4" (45 mm)

Material:

Zinc Plated Steel

Maximum Door Weight:

275 lbs

Notes:

Use with 9101 track, with doors weight up to 275 lbs (125 kg)

Four wheel hanger is self-aligning to allow consistent contact with track

1 each, order 2 per door

Packaging:

1 each, order 2 per door

Related Products:

9101 track

Wheels:

Nylon with Steel ball bearings