



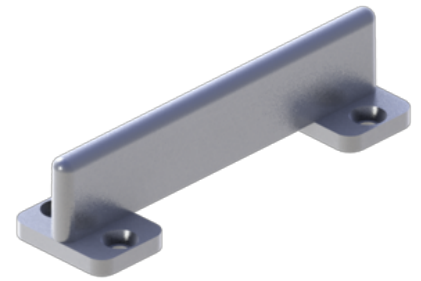
PRODUCT SPECIFICATIONS

For more information visit www.hagerco.com

9115 - Bottom Door Guide

Bottom Door Guide for use with 9110 and 9130 tracks

Applications



PRODUCT SPECIFICATIONS

Case Quantity:
50

Guide Plate Height:
7/8"

Guide Plate Length:
3"

Guide Plate Width:
3/4"

Material:
Die Cast Zinc Aluminum Alloy

Notes:
Guide: 7/8" (22 mm) x 3/4" (19 mm) x 3" (76 mm)

Door bottom prep requires 1/4" (6.4 mm) wide kerf and 9/16" (14 mm) depth

Included in 9710 wall-mount packaged sets and 9711 parts bag

Packaging:
Bulk

Related Products:
9710 wall-mount packaged sets and 9711 parts bag