



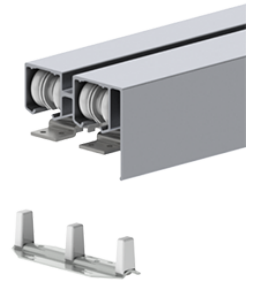
PRODUCT SPECIFICATIONS

For more information visit www.hagerco.com

9885-48

By-pass set for two 24" doors

Applications



PRODUCT SPECIFICATIONS

Case Quantity:
1

Conforms To:
ANSI A156.14

Door Thickness:
For doors 1-3/8" - 1-3/4" (35 mm - 44 mm) thick

Maximum Door Weight:
250 lbs

Notes:
For doors 1-3/8" - 1-3/4" (35 mm - 44 mm) thick

Track is extruded aluminum jump-proof style with "V" shaped rails
and integral 3-1/2" (88 mm) fascia

Hangers have four (4) 1-1/4" (23 mm) diameter wheels

Fascia is meant to be accompanied by decorative trim and not
exposed as a finished product

Decorative trim not provided by Hager Companies

Packaged Sets:
4' (1219 mm) Opening for 2 doors - 9885-48

Type:
D8731, D8751