



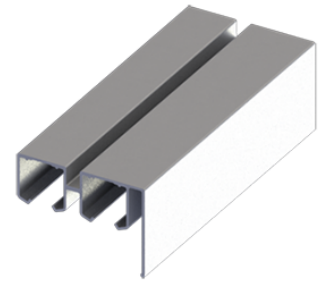
PRODUCT SPECIFICATIONS

For more information visit www.hagerco.com

9803-120

Double Box Track w/ Smooth Fascia, Heavy Duty Aluminum

Applications



PRODUCT SPECIFICATIONS

Case Quantity:
2

Gauge:
0.075" (2 mm)

Material:
Extruded Aluminum

Maximum Door Weight:
250 lbs (113 kg)

Notes:
Jump proof twin channel design

One piece track with built-in fascia

For doors up to 250 lbs (113 kg), Fascia is meant to be accompanied by decorative trim and not exposed as a finished product

Decorative trim not provided by Hager Companies