



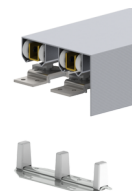
PRODUCT SPECIFICATIONS

For more information visit www.hagerco.com

9673-72

By-pass set for two 36" doors - Heavy Duty
Aluminum Track with 2-5/8" (66 mm) with Built-in
Grooved Fascia and Hardware

Applications



PRODUCT SPECIFICATIONS

By-Pass Sets:

For two 36" (914 mm) doors

Case Quantity:

5

Door Thickness:

For doors 3/4" - 1-3/4"

Includes:

9603 track, 9679 parts bag

Maximum Door Thickness:

1-3/8" to 1-3/4"

Maximum Door Weight:

125 lbs

Notes:

Built in grooved fascia that measures at 2-5/8" (66 mm)

Grooved fascia ideal for painting

For doors 3/4" - 1-3/4"

Parts Bag:

9679 = 125 lb (57 kg); 4 each 9605 Hanger & 9610 Top Mount
Plate, 1 each 9909 Guide