



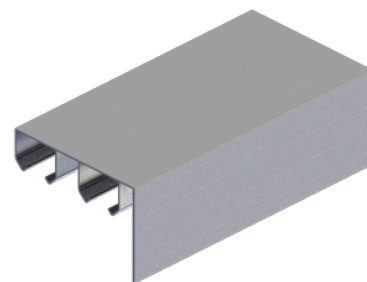
## PRODUCT SPECIFICATIONS

For more information visit [www.hagerco.com](http://www.hagerco.com)

# 9603-96

Aluminum box track with grooved fascia

## Applications



## PRODUCT SPECIFICATIONS

Case Quantity:

5

Material:

Extruded Aluminum

Notes:

Grooved fascia for painting

Jump proof double twin channel design,

One piece track with built-in grooved fascia

Additional Notes: Refer to series pages for weight capacities

Packaging:

Bulk

Wheels:

7/8" (22 mm) diameter