



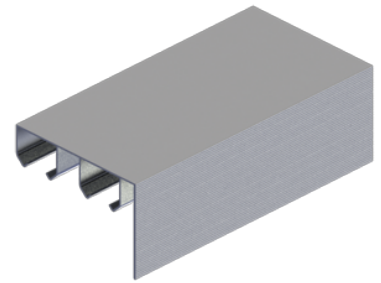
## PRODUCT SPECIFICATIONS

For more information visit [www.hagerco.com](http://www.hagerco.com)

# 9603-120

Aluminum box track with grooved fascia

## Applications



## PRODUCT SPECIFICATIONS

Case Quantity:  
5

Material:  
Extruded Aluminum

Notes:  
Grooved fascia for painting,

Jump proof double twin channel design

One piece track with built-in grooved fascia

Additional Notes: Refer to series pages for weight capacities

Packaging:  
Bulk

Wheels:  
7/8" (22 mm) diameter