



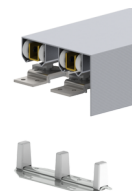
## PRODUCT SPECIFICATIONS

For more information visit [www.hagerco.com](http://www.hagerco.com)

# 9674-48

By-pass set for two 24" doors - Heavy Duty  
Aluminum Track with 2-5/8" (66 mm) with Built-in  
Grooved Fascia and Hardware

## Applications



## PRODUCT SPECIFICATIONS

Case Quantity:  
5

Door Thickness:  
For doors 3/4" - 1-3/4"

Notes:  
Built in grooved fascia that measures at 2-5/8" (66 mm)

Grooved fascia ideal for painting

For doors 3/4" - 1-3/4"

Parts Bag:  
9679 = 125 lb (57 kg); 4 each 9605 Hanger & 9610 Top Mount  
Plate, 1 each 9909 Guide