

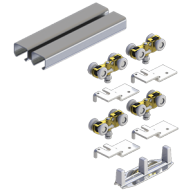


PRODUCT SPECIFICATIONS

For more information visit www.hagerco.com

9675-72

By-pass set for two 36" doors - Heavy Duty
Aluminum Double Box Track and Hardware for
doors 1-3/8" to 1-3/4" thick



Applications

PRODUCT SPECIFICATIONS

By-Pass Sets:

9675-72 = For two 36" (914 mm) doors

Case Quantity:

5

Door Thickness:

1-3/8" to 1-3/4" thick

Includes:

9602 track, 9679 parts bag

Maximum Door Thickness:

1-3/8" to 1-3/4"

Notes:

By-Pass Sets:

9675-48 = For two 24" (610 mm) doors

9675-60 = For two 30" (762 mm) doors

9675-72 = For two 36" (914 mm) doors

9675-96 = For two 48" (1219 mm) doors

Aluminum Double Box Track:

9602-46 = 46" (1168 mm)

9602-58 = 58" (1473 mm)

9602-70 = 70" (1778 mm)

9602-94 = 94" (2388 mm)

9602-118 = 118" (2997 mm)

9602-142 = 142" (3607 mm)

Aluminum Fascia:

9709-72 = 72" (1829 mm) 2-3/4" (70 mm)

9709-96 = 96" (2438 mm) 2-3/4" (70 mm)

Parts Bag:

9679 = 125 lb (57 kg); 4 each 9605 Hanger and 9610 Top Mount Plate, 1 each 9909 Guide

Parts Bag:

9679 = 125 lb (57 kg); 4 each 9605 Hanger and 9610 Top Mount Plate, 1 each 9909 Guide

Related Products:

9602, 9709, 9679

Website Note:

Grooved fascia for painting