



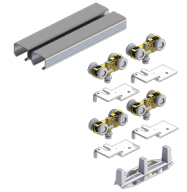
## PRODUCT SPECIFICATIONS

For more information visit [www.hagerco.com](http://www.hagerco.com)

# 9676-60

By-pass set for two 30" doors - Heavy Duty  
Aluminum Double Box Track and Hardware for  
doors 1-3/8" to 1-3/4" thick

## Applications



## PRODUCT SPECIFICATIONS

Case Quantity:  
5

Door Thickness:  
1-3/8" to 1-3/4" thick

Maximum Door Thickness:  
1-3/4" thick

### Notes:

#### By-Pass Sets:

9675-48 = For two 24" (610 mm) doors

9675-60 = For two 30" (762 mm) doors

9675-72 = For two 36" (914 mm) doors

9675-96 = For two 48" (1219 mm) doors

#### Aluminum Double Box Track:

9602-46 = 46" (1168 mm)

9602-58 = 58" (1473 mm)

9602-70 = 70" (1778 mm)

9602-94 = 94" (2388 mm)

9602-118 = 118" (2997 mm)

9602-142 = 142" (3607 mm)

#### Aluminum Fascia:

9709-72 = 72" (1829 mm) 2-3/4" (70 mm)

9709-96 = 96" (2438 mm) 2-3/4" (70 mm)

#### Parts Bag:

9679 = 125 lb (57 kg); 4 each 9605 Hanger and 9610 Top Mount  
Plate, 1 each 9909 Guide

#### Parts Bag:

9679 = 125 lb (57 kg); 4 each 9605 Hanger and 9610 Top Mount  
Plate, 1 each 9909 Guide

#### Related Products:

9602, 9709, 9679

#### Website Note:

Grooved fascia for painting