



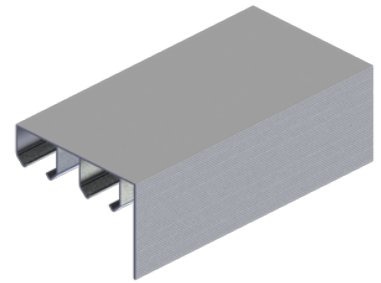
PRODUCT SPECIFICATIONS

For more information visit www.hagerco.com

9603-144

Aluminum box track with grooved fascia

Applications



PRODUCT SPECIFICATIONS

Case Quantity:
5

Material:
Extruded Aluminum

Notes:
Grooved fascia for painting,

Jump proof double twin channel design,

One piece track with built-in grooved fascia

Additional Notes: Refer to series pages for weight capacities

Packaging:
Bulk

Wheels:
7/8" (22 mm) diameter