



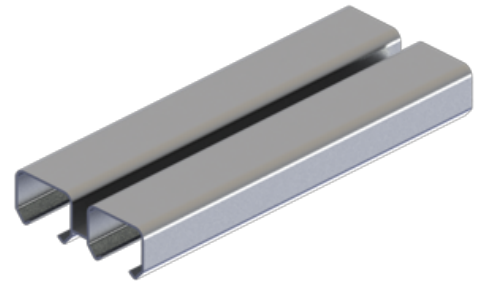
PRODUCT SPECIFICATIONS

For more information visit www.hagerco.com

9602-142

Double box track only, heavy duty aluminum

Applications



PRODUCT SPECIFICATIONS

Case Quantity:
5

Gauge:
0.050" (1.3 mm)

Material:
Extruded Aluminum

Notes:
Jump proof double twin channel design

Refer to series page for weight capacities

For 1-3/4" applications, both doors are off center

Use 9607 on the front door and 9608 on the rear door. Also, use 9909 floor guide

For 1-3/4" applications, both doors are off center. Use 9607 on the front door and 9608 on the rear door. Also use 9909 floor guide

Packaging:
Bulk

Related Products:
9607, 9608, 9909

Website Note:
I