



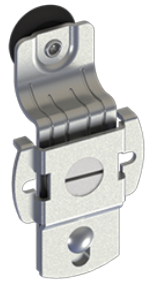
PRODUCT SPECIFICATIONS

For more information visit www.hagerco.com

9401 - Micro Adjust Hanger

Cam Adjustable Hanger - Large 11/16" (18 mm) offset
B

Applications



PRODUCT SPECIFICATIONS

Case Quantity:
100

Gauge:
0.075" (2 mm)

Material:
Zinc plated steel with molded Celcon wheels

Maximum Door Weight:
60 lbs (27 kg)

Notes:
Side mounted with precise cam adjustment

Hanger is stamped "B" for easy identification

For use on doors weighing up to 60 lbs (27 kg)

For use with 9810, 9820, and 9840 track

Related Products:
9810, 9820, and 9840 track

Use:
For use with 9810, 9820, and 9840 track

Wheels:
7/8" (22 mm) diameter