



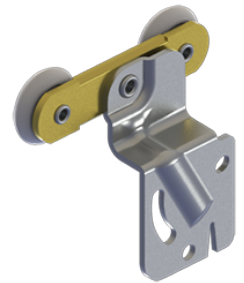
## PRODUCT SPECIFICATIONS

For more information visit [www.hagerco.com](http://www.hagerco.com)

# 9202 - 2-Wheel Hanger

Twin Wheel Hanger - Large 11/16" (18 mm) offset B

## Applications



## PRODUCT SPECIFICATIONS

Case Quantity:  
100

Gauge:  
0.075" (2 mm)

Material:  
Zinc plated steel with molded Celcon wheels

Maximum Door Weight:  
60 lbs (27 kg)

Notes:  
Side mounted with slot adjust offset

Hanger is stamped with "A" or "B" for easy identification

For use on doors weighing up to 60 lbs (27 kg)

For use with 9810, 9820, and 9840 track

B offset of 11/16" (18 mm)

Related Products:  
9810, 9820, and 9840 track

Use:  
For use with 9810, 9820, and 9840 track

Wheels:  
7/8" (22 mm) diameter