

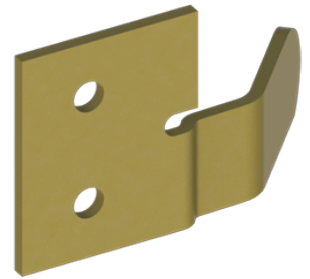


PRODUCT SPECIFICATIONS

For more information visit www.hagerco.com

9559 Aligner

Applications



PRODUCT SPECIFICATIONS

Case Quantity:
200

Material:
Steel with Brass-tone Dichromate finish

Notes:
Use one on each lead door

Packaging:
Bulk

Use:
Keeps lead doors aligned when closed