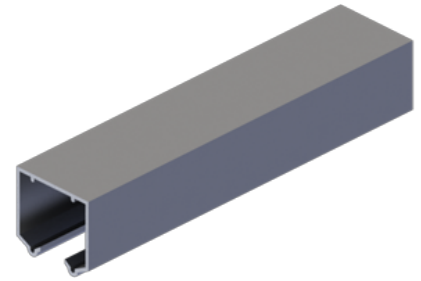




PRODUCT SPECIFICATIONS  
For more information visit [www.hagerco.com](http://www.hagerco.com)

## 9801-96 Heavy Duty Aluminum Box Track

### Applications



### PRODUCT SPECIFICATIONS

Case Quantity:  
10

Conforms To:  
ANSI A156.14/ Type: D8681, D8711

Door Thickness:  
For doors 1-3/8" - 1-3/4" (35 mm - 44 mm) thick

Gauge:  
0.075" (2 mm)

Material:  
Extended aluminum

Maximum Door Thickness:  
1-3/4" (44 mm)

Maximum Door Weight:  
250 lbs

Notes:  
For doors up to 250 lbs (113 kg)

Jump proof twin channel design

For doors 1-3/8" - 1-3/4" (35 mm - 44 mm) thick

Track is extruded aluminum jump-proof style with "V" shaped rails

Hangers have four 1-1/4" (32 mm) diameter wheels

Packaged Sets:  
9878-72: 72" (1829 mm) Pocket Door Set for 3' (914 mm) door  
9778-96: 96" (2438 mm) Pocket Door Set for 4' (1219 mm) door