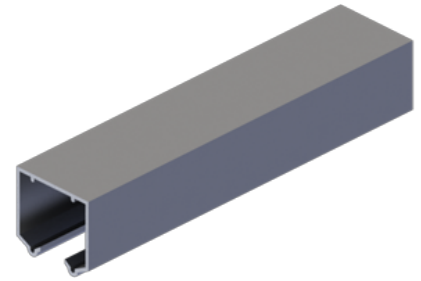




PRODUCT SPECIFICATIONS
For more information visit www.hagerco.com

9801-120 Heavy Duty Aluminum Box Track

Applications



PRODUCT SPECIFICATIONS

Case Quantity:
10

Conforms To:
ANSI A156.14/ Type: D8681, D8711

Door Thickness:
For doors 1-3/8" - 1-3/4" (35 mm - 44 mm) thick

Gauge:
0.075" (2 mm)

Material:
Extended aluminum

Maximum Door Thickness:
1-3/4" (44 mm)

Maximum Door Weight:
250 lbs

Notes:
For doors up to 250 lbs (113 kg)

Jump proof twin channel design

For doors 1-3/8" - 1-3/4" (35 mm - 44 mm) thick

Track is extruded aluminum jump-proof style with "V" shaped rails

Hangers have four 1-1/4" (32 mm) diameter wheels

Packaged Sets:
9878-72: 72" (1829 mm) Pocket Door Set for 3' (914 mm) door
9778-96: 96" (2438 mm) Pocket Door Set for 4' (1219 mm) door