



## PRODUCT SPECIFICATIONS

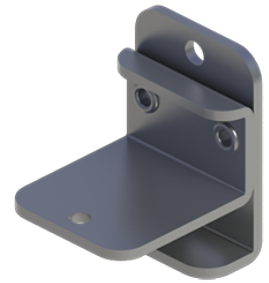
For more information visit [www.hagerco.com](http://www.hagerco.com)

# 9900

## 9900

### Reversible Side Mount Bracket

#### Applications



## PRODUCT SPECIFICATIONS

Case Quantity:  
20

Fasteners:  
#10 x 3/8" Phillips Pan Head tapping screws - track, #10 x 1-1/2"  
Phillips Pan Head tapping screws - wall

Gauge:  
0.060" (2 mm)

Material:  
Steel with bright zinc

Maximum Door Weight:  
250 lbs

Notes:  
Guide: - 4-7/8" x 1-5/8" x 1-3/16" (214 mm x 41 mm x 30 mm)

Posts:  
Molded Celcon/Nylon

Product Name:  
Reversible Side Mount Bracket