

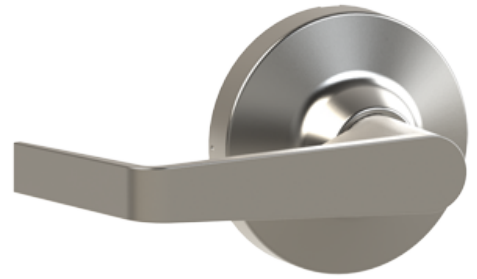


PRODUCT SPECIFICATIONS

For more information visit www.hagerco.com

47KD

Applications



PRODUCT SPECIFICATIONS

Backsets:

2-3/4" (70 mm) - standard frame and door (161 or Turtle Prep)
Exit device dependent

Certifications:

Complies with ANSI A117.1 for accessible buildings and facilities
(levers only)

Door Thickness:

1-3/4" (45 mm)

Finishes:

ALM, DBZ, US3, US32D

Functions:

02 - Entrance by trim when actuating bar is locked down

Lever Options:

Archer, August, Withnell

Notes:

4700 have steel bodies and zinc handles. The exception being
US32D which has a stainless steel rose.

Projection:

Archer - 3-1/16" (78 mm), August - 3-3/16" (80 mm), Withnell -
3-1/16" (78 mm)

Rose Diameter:

3-3/8" (86 mm)

Standard Door Prep:

2-1/8" (54 mm) diameter (cross bore),
Turtle Prep compatible ANSI A156.115

Warranty:

Five-years