

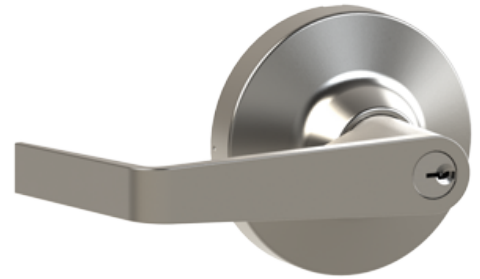


PRODUCT SPECIFICATIONS

For more information visit www.hagerco.com

47KN

Applications



PRODUCT SPECIFICATIONS

Certifications:

Complies with ANSI A117.1 for accessible buildings and facilities (levers only)

Cylinders/Cores:

Conventional cylinder, C keyway - standard on levers and knob
Small Format Interchangeable Core housing available on levers only (cylinder sold separately, 3981 or 3982)
Other keying options available from factory

Door Thickness:

1-3/4" (45mm)

Finishes:

ALM, DBZ, US3, US32D for levers
US32D for knob

Functions:

03 - Entrance by trim when latch bolt is released by key; removable when locked

Keys:

Two brass keys per lock

Lever Options:

Archer, August, Withnell levers,
Apollo knob

Notes:

4700 have steel bodies and zinc handles. The exception being US32D which has a stainless steel rose.

Projection:

3-1/16" (78 mm) for Archer, 3-3/16" (80 mm) for August, 3-1/16 (78 mm) for Withnell, 3-1/8" (79 mm) for Apollo

Rose Diameter:

3-3/8" (86 mm)

Standard Door Prep:

2-1/8" (54 mm) diameter (cross bore),
Turtle Prep compatible ANSI A156.115

Warranty:

Five-years