



## 8321 Double Egress Simultaneous Pair

8321

Low Energy Auto Operator for Double Egress Door Openings. Simultaneous or Independent Applications.

### Applications

For use on fire-rated and non-fire-rated openings  
Exterior Doors: Yes (Interior side only)  
Works on both outswing or inswing doors  
Adjustable Opening Angle: Max Degree of Swing Powered  
-180 degrees (push), 140 (pull)  
Opening Force: <15 lbs. - Exceeds all ADA requirements  
Closing Force: >8 lbs.

### PRODUCT SPECIFICATIONS

#### Accessories:

2-679-0907 – KP EVO Programming Device (Required for advanced programming features.)

#### Adjustable Latch Check Speed:

Yes

#### Adjustable Opening/Closing Speeds:

Yes - Exceeds all ADA requirements.

#### Adjustable Swing Degree:

80° to 140°

#### Auto Reverse:

If the unit detects an obstacle, the door will travel in the opposite path

#### Box Quantity:

1

#### Built-In Stop:

Manual swing to 180 degrees/Power swing to 140 degrees (pull),  
180 degrees (push)

#### Certifications:

ANSI Meets A156.19  
Complies with all U.S. and Canada ADA requirements for low energy operators  
UL/cUL (Fire rating) Listed for up to 3 hours  
UL10C Positive Pressure Rated  
UL325 Listed

#### Closing Force:

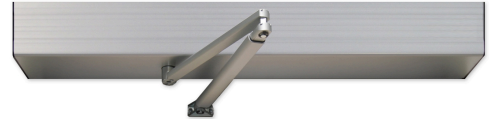
>8 lbs.

#### Electrical Specifications:

Power Requirements: 115 VAC 60 HZ  
Current Draw: 0.4 A to 1.2 A (Max) (Each Motor)  
Onboard Power Supply: 24 VDC 1 A (Each Motor)  
Electric Lock Relay Type: Form "C" SPDT (Each Motor)  
Lock Relay Rating: 5.0A @ 28 VDC (Each Motor)  
Fused Protection: 3.15A fuse (Each Motor)

#### Features:

Non-handed  
Operates as a manual closer with or without power  
Onboard power supply for accessories i.e. electric and magnetic locks, sensors, etc.  
Built-in adjustable door stop for protection against wind or abusive environments



Blow open function for smoke ventilation (alarm contacts)

Equipped with cycle count

Factory setting for ANSI 156.19 speed requirements AND hold time delay

Night mode allows the exterior actuator to be deactivated by a rocker switch on the side of the operator

On/Off/Hold Open Switch: Standard

Fire Alarm input shunts swing activations until FACP is manually reset

Memory is flash upgradeable

#### Finishes:

ALM

#### Fire Alarm Input:

FA input shunts swing activations until FACP is manually reset

#### Fire Rating:

UL/cUL (Fire rating) Listed for up to 3 hours

#### Handicap:

ANSI Meets A156.19

Complies with all U.S. and Canada ADA requirements for low energy operators

#### Hold Open:

5 second minimum (per ADA)

#### Housing:

Aluminum

#### Housing Height:

5"

#### Housing Length:

Door Opening Width +3"

#### Housing Width:

4-1/2"

#### How To Order:

How to order form located in related files

#### Includes:

Appropriate door signage included with each operator

#### Installation:

Single person installation using pre-drilled mounting holes



## PRODUCT SPECIFICATIONS

For more information visit [www.hagerco.com](http://www.hagerco.com)

**Length Options:**

72", 84", 88", 96" (Non-Standard Sizes Available)

**Maximum Door Length:**

5'

**Maximum Door Weight:**

350 lbs.

**Obstruction Stop:**

Unit will stop cycle if an obstacle is detected in the swing path

**Onboard Power Supply:**

24 VDC 1A

**On/Off/Hold Open Switch:**

Standard

**On/Off Power Switch:**

Standard

**Opening Force:**

<15 lbs. - Exceeds all ADA requirements

**Operating Temperature:**

-4°F to + 131°F

**Power Requirements:**

115 VAC 60 HZ

**Product Name:**

Double Egress Simultaneous/Independent Pair Operator

**Programmable Functionality:**

Boost on close - selectable power assist and additional force for the last 10 degrees of closing  
Adjustable Opening Force Limitation  
Adjustable Opening and Closing Speeds  
Adjustable Hold Open Time for Door Activators

**Programmer Option:**

Yes (2-679-0907)

**Push to Start/Push 'n Go:**

A safety sensor is required when Push-N-Go is used.

**Reveal:**

Double Egress Arm: 4"

**Size:**

5" H x 4-1/2" D x Length equals opening width plus 3"

**Warranty:**

2 Year