



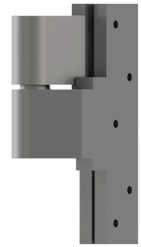
PRODUCT SPECIFICATIONS  
For more information visit [www.hagerco.com](http://www.hagerco.com)

## 496 Ball and Thrust Bearing Intermediate

496

Ball and Thrust Bearing Heavy Weight Intermediate

### Applications



### PRODUCT SPECIFICATIONS

Box Quantity:  
1

Certifications:  
ANSI C07321

Fastener Size - Machine:  
5/8 x 1/4-20

Fastener Size - Wood:  
1-1/2 x 14

Features:  
Handed (specify handing when ordering)

Finishes:  
US26D

Gauge:  
See Sizing Chart Options

Hole Count:

Material:  
Forged Bronze

Maximum Door Height:  
8' (2438 mm)

Maximum Door Length:  
3' (914 mm)

Maximum Door Weight:  
350 lbs.

Notes:  
For doors up to and including 3'0" x 8'0" (91 x 244 cm) weighing maximum of 350 pounds, apply all three pivots #495, #496, #497.  
For doors over 3'6" (107 cm) up to 4'0" (122 cm) in width, add one additional intermediate pivot #496.  
For each additional 12" (305 mm) in door height over 8'0" (244 cm) add one intermediate pivot #496.

Offset:  
3/4" (19mm) offset

Product Name:  
Ball and Thrust Bearing Heavy Weight Intermediate

H Width:  
See Sizing Chart Options