

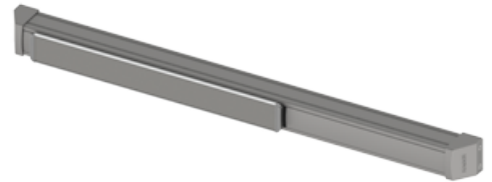


PRODUCT SPECIFICATIONS
For more information visit www.hagerco.com

4500/4600 Series Dummy Push Pad

Grade 1 Exit Device, Dummy Push Pad

Applications



PRODUCT SPECIFICATIONS

Cover Tube:
Aluminum

Door Width:
36" (914mm) field sizeable to 30" (762mm) panic-rated door and
28" (711mm) fire-rated door
48" (1219mm) field sizeable to 36" (914mm) panic- or fire-rated
door

End Caps:
Zinc

Fasteners:
Wood and machine screws - Thru-bolts

Finishes:
US3, US10B, US26D, US32D, BLK

Projection:
2-5/8" (67mm)

Stile Width:
2-1/8" (54mm) - minimum stile width; all stile widths are measured
from the door edge

Warranty:
Lifetime