



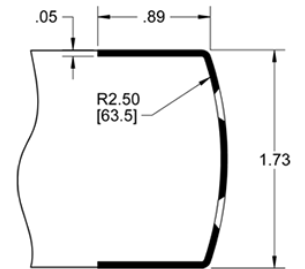
PRODUCT SPECIFICATIONS

For more information visit www.hagerco.com

180Q

Mortise Door Edging

Applications



PRODUCT SPECIFICATIONS

Certifications:

Meets ANSI A156.6 door edging type J201 through J212

Fasteners:

#6 x 5/8" FPHSMS self drilling (#6 x 1" available on request)

Finishes:

US28, US32D

How To Order:

Provide item #, size, and finish (i.e. 180Q - 40" - US32D). Provide actual door thickness.

Material:

Aluminum, Stainless Steel

Notes:

Standard edge guards made for 1- 3/4" +0 / -1/32" door thickness
Cutouts will hand product, specify handing
Other lengths by quotation
Hinge and latch cutouts available
UL rated edging available

Standard Lengths:

36" - 42" (914 mm - 1067 mm)

Thickness:

.045" - .050" (1.1 mm - 1.3 mm)