

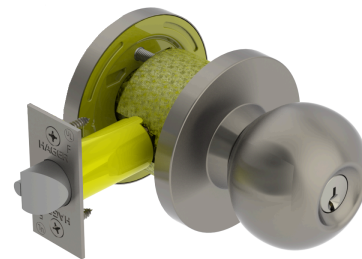


PRODUCT SPECIFICATIONS  
For more information visit [www.hagerco.com](http://www.hagerco.com)

## 3579 Knob - Keyed Communicating (F113)

### Applications

Standard Duty Commercial



### PRODUCT SPECIFICATIONS

#### Backsets:

- 2-3/4" (70mm)
- 2-3/8" (60mm)

Warranty:  
Lifetime

#### Certifications:

- Meets BHMA Certified ANSI A156.2, Series 4000, Grade 2
- UL/cUL Listed for all functions up to 3 hours for "A" label single doors
- UL10C Positive Pressure Rated

#### Cylinders/Cores:

- Brass 6-pin - Keyed Different - Schlage C Keyway - standard
- Cylinder drilled 6 pin , Keyed 5 pin - standard
- Other keying options including 6 pin available from factory
- Zero bit cylinders will be 6 pin keyed - standard
- Interchangeable Cores not available on Apollo knob

#### Door Thickness:

- 1-3/8" - 1-3/4" (35mm - 45mm)

#### Exposed Trim:

- Wrought Brass or Stainless Steel

#### Features:

- No exposed mounting screws
- Non-handed

#### Finishes:

- US3 and US32D

#### Functions:

- Keyed Communicating (F113)

#### Keyway:

- Schlage C - Standard, other keyways optional

#### Knob Diameter:

- 2-1/4" (58mm)

#### Latchbolt Type:

- 1/2" Throw - Stainless Steel. Deadlocking latchbolt prevents manipulation when door is closed

#### Lock Chassis:

- Heavy gauge steel, zinc dichromated for corrosion resistance

#### Notes:

- Blank plate projection is 13/16 (21mm)

#### Product Name:

- Grade 2 Cylindrical Knob

#### Rose Diameter:

- 3" (76 mm)

#### Strikes:

- 3935 - 1-1/4" x 4-7/8" (32 mm x 124 mm) ASA strike