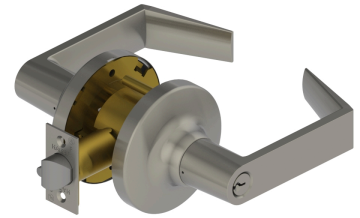


3482 - Institution (F87)

Applications

Extra Heavy Duty Commercial
Industrial
Institution



PRODUCT SPECIFICATIONS

Backsets:

2-3/4" (70mm) - Standard
2-3/8" (60mm) - Optional
3-3/4" (94mm) - Optional
5" (128mm) - Optional

Certifications:

ADA Compliant ANSI A117.1 Accessibility Code
UL/cUL Listed for all functions up to 3 hours "A" label single doors
UL10C Positive Pressure Rated
BHMA Certified ANSI A156.2, Series 4000, Grade 1
ANSI A250.13 Severe Windstorm Compliant
Miami Dade County, FL NOA #17-1226.23

Cylinders/Cores:

Keyed Different - standard
Cylinder drilled 6 pin, Keyed 5 pin - standard
Other Keying options, including 6 pin keyed, available from factory
Zero bit cylinders will be 6 pin keyed
SFIC uncombined or combined, brass 6 pin or 7 pin cores sold separately
LFIC Zero-Blt or combined, brass 6 pin cores sold separately

Door Thickness:

1-3/8" - 2" (35 mm - 51 mm)

Exposed Trim:

Wrought brass, bronze, and stainless steel
Lever is zinc based, plated to match BHMA symbols

Features:

No exposed mounting screws
Non-handed
Free wheeling levers

Finishes:

US3, US4, US10B, US26 and US26D
Anti-Microbial Coating (US26D finish only)

Functions:

Institution (F87)

Keyway:

Schlage C - Standard, Other keyways optional

Latchbolt Type:

1/2" (13 mm) throw, stainless steel
1-1/8" x 2-1/4" (29 mm x 57 mm) faceplate
Deadlocking latchbolt prevents manipulation when door is closed
3/4" (19 mm) throw latchbolt available

Lever Options:

Archer, August and Withnell

Lock Chassis:

Heavy gauge steel, zinc dichromated for corrosion resistance. Thru-post mounted.

Notes:

SFIC option available (Cores are sold separately - standard)
LFIC option available (Cores sold separately - standard)
2-1/8" (54mm) diameter with thru-bolt holes (cross bore)
Latch hole - 1" (25mm) diameter (edge bore)

Options:

Lead Lining
Tactile Warning
Split Finish

Rose Diameter:

3-17/32" (90 mm)

Standard Door Prep:

2-1/8" (54 mm) diameter with thru-bolt holes (cross bore)
Latch hole - 1" (25 mm) diameter (edge bore)

Strikes:

1-1/4" x 4-7/8" (32 mm x 124 mm) ASA strike - Standard
3933 T-Strike - Optional
3934 Full Lip Strike - Optional
3958 Full Lip Strike, Round Corner - Optional

Warranty:

Lifetime