



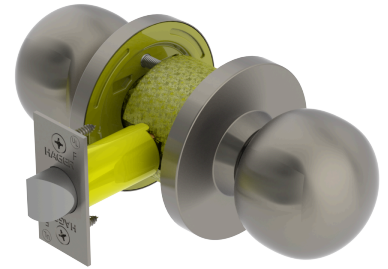
PRODUCT SPECIFICATIONS

For more information visit www.hagerco.com

3510 Knob - Passage (F75)

Applications

Standard Duty Commercial



PRODUCT SPECIFICATIONS

Backsets:

2-3/4" (70mm)

2-3/8" (60mm)

Certifications:

Meets BHMA Certified ANSI A156.2, Series 4000, Grade 2

UL/cUL Listed for all functions up to 3 hours for "A" label single doors

UL10C Positive Pressure Rated

Door Thickness:

1-3/8" - 1-3/4" (35 mm - 45mm)

Exposed Trim:

Wrought Brass or Stainless Steel

Features:

No exposed mounting screws

Non-handed

Finishes:

US3 and US32D

Functions:

Passage (F75)

Knob Diameter:

2-1/4" (58mm)

Latchbolt Type:

1/2" Throw - Stainless Steel

Lock Chassis:

Heavy gauge steel, zinc dichromated for corrosion resistance

Rose Diameter:

3" (76mm)

Strikes:

3935 - 1-1/4" x 4-7/8" (32 mm x 124 mm) ASA strike

Other strikes available

Warranty:

Lifetime