



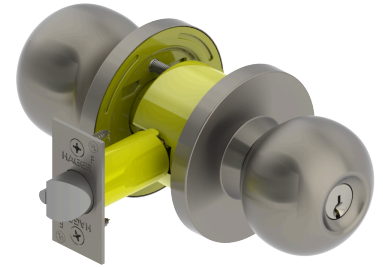
## PRODUCT SPECIFICATIONS

For more information visit [www.hagerco.com](http://www.hagerco.com)

# 3550 Knob - Office (F82A)

## Applications

Standard Duty Commercial



## PRODUCT SPECIFICATIONS

### Backsets:

- 2-3/4" (70mm)
- 2-3/8" (60mm)

### Certifications:

- Meets BHMA Certified ANSI A156.2, Series 4000, Grade 2
- UL/cUL Listed for all functions up to 3 hours for "A" label single doors
- UL10C Positive Pressure Rated

### Cylinders/Cores:

- Brass 6-pin - Keyed Different - Schlage C Keyway - standard
- Cylinder drilled 6 pin , Keyed 5 pin - standard
- Other keying options including 6 pin available from factory
- Zero bit cylinders will be 6 pin keyed - standard
- Interchangeable Cores not available on Apollo knob

### Door Thickness:

- 1-3/8" - 1-3/4" (35mm - 45mm)

### Exposed Trim:

- Wrought Brass or Stainless Steel

### Features:

- No exposed mounting screws
- Non-handed

### Finishes:

- US3 and US32D

### Functions:

- Office (F82A)

### Keyway:

- Schlage C - Standard, other keyways optional

### Knob Diameter:

- 2-1/4" (58mm)

### Latchbolt Type:

- 1/2" Throw - Stainless Steel. Deadlocking latchbolt prevents manipulation when door is closed

### Lock Chassis:

- Heavy gauge steel, zinc dichromated for corrosion resistance

### Product Name:

- Grade 2 Cylindrical Knob

### Rose Diameter:

- 3" (76 mm)

### Strikes:

- 1-1/4" x 4-7/8" (32 mm x 124 mm) ASA strike
- Other strikes available

Warranty:  
Lifetime