



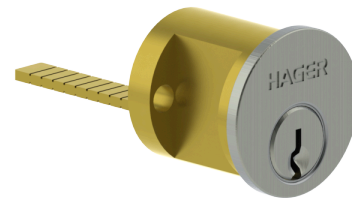
PRODUCT SPECIFICATIONS

For more information visit www.hagerco.com

3901 - Fixed

Fixed Rim Cylinder

Applications



PRODUCT SPECIFICATIONS

Finishes:

US3, US4, US10B, US26, US26D, BLK

Keyway:

Schlage C standard, other keyways optional

Notes:

Conventional cylinders are 6-Pin drilled, 5-Pin keyed
Available keying: KA, KD, 0BIT, MK and CMK
Machined from solid brass
Shipped with collar, mounting plate and break-off screws
Supplied with (2) key blanks