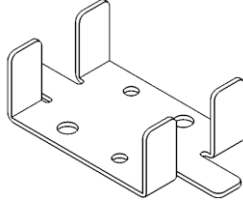
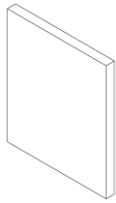


Contents:	Qty:		
1. Wider Floor Plates	2	1. 	2. 
2. Shim	4		

The **1-3/4" Adapter** gives additional clearance for 1-3/4" thick doors.

## 1 Replace Floor Plates

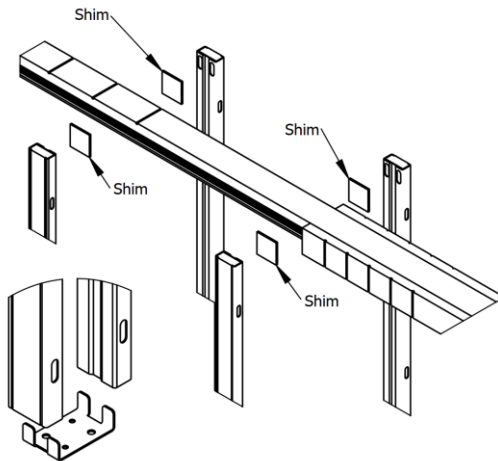


Figure 1

- Discard the standard floor plates that came with the pocket door kit
- Replace it with the wider floor plates included in this kit

## 2 Apply Spacers

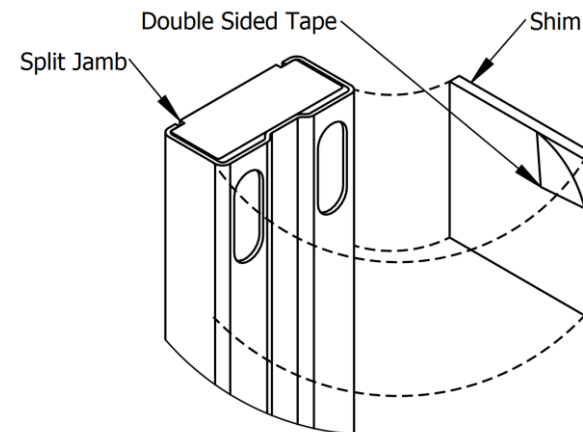


Figure 2

- Peel the paper off the 1/8" shim
- Stick it to the top of each split jamb covering the slots
- Follow the rest of the installation instructions included with the pocket door kit