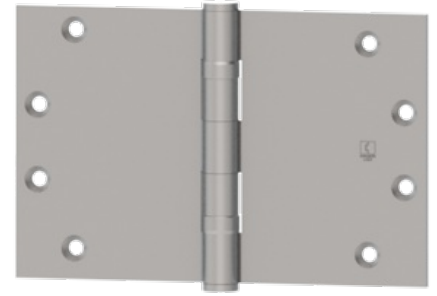


WTBB1191

Five Knuckle
Ball Bearing
Standard Weight - Wide Throw

Application:

- ANSI A2112 (Brass)
- ANSI A5112 (Stainless Steel)
- Two ball bearings
- Non-rising removable pin with button tip and plug
- For use on medium weight doors or doors requiring medium frequency service



PRODUCT SPECIFICATIONS

MATERIAL:

- Stainless Steel with Stainless Steel pin
- Brass with Stainless Steel pin

FINISHES:

- US3, US4, US10, US10B, US26, US26D, US32, US32D

PRODUCT SIZE OPTIONS

HINGE SIZE (INCHES)	HINGE SIZE (MM)	GAUGE OF METAL	HOLE COUNT	SCREW SIZE (MACHINE)	SCREW SIZE (WOOD)
3-1/2 x 5	89 x 127	0.119	6	1/2 x 10-24	1 x 9
3-1/2 x 6	89 x 152	0.119	6	1/2 x 10-24	1 x 9
4 x 5	102 x 127	0.129	8	1/2 x 12-24	1-1/4 x 12
4 x 6	102 x 152	0.129	8	1/2 x 12-24	1-1/4 x 12
4 x 7	102 x 178	0.129	8	1/2 x 12-24	1-1/4 x 12
4-1/2 x 5	114 x 127	0.134	8	1/2 x 12-24	1-1/4 x 12
4-1/2 x 6	114 x 152	0.134	8	1/2 x 12-24	1-1/4 x 12
4-1/2 x 7	114 x 178	0.134	8	1/2 x 12-24	1-1/4 x 12
4-1/2 x 8	114 x 203	0.134	8	1/2 x 12-24	1-1/4 x 12
5 x 6	127 x 152	0.145	8	1/2 x 12-24	1-1/4 x 12
5 x 7	127 x 178	0.145	8	1/2 x 12-24	1-1/4 x 12
5 x 8	127 x 203	0.145	8	1/2 x 12-24	1-1/4 x 12