

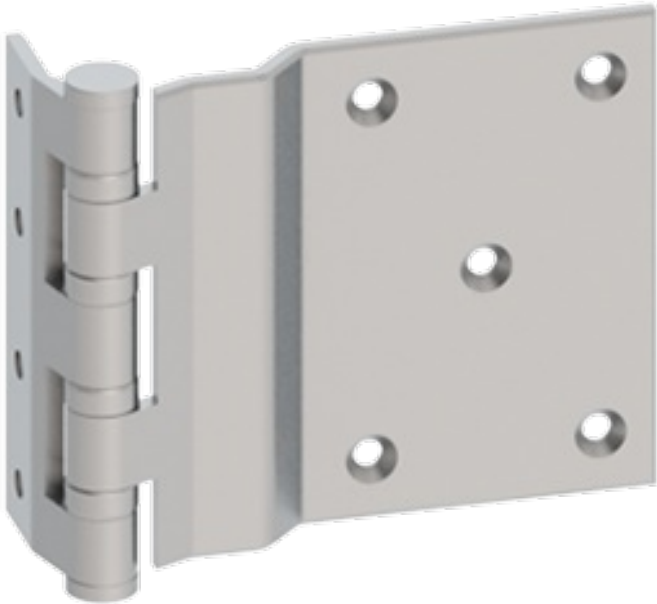


BB1266

Product Information

Note: - When opened 90°, door projects 11/64" (4 mm) past stop of jamb

Five Knuckle - Full Surface -
Ball Bearing - Heavy Weight



Product Specifications

- Description:** - ANSI A8321
- Beveled surface leaves
- Non-rising removable pin with button tip and plug
- Four ball bearings
- Reversible
- For use in hospitals or other institutional type buildings
- Material:** - Steel with Stainless Steel pin
- Finishes:** - USP, US10, US10A, US10B, US26D

Product Size Options

Hinge Size (inches)	Hinge Size (mm)	Gauge of Metal	Hole Count	Door Leaf Screw Size (Machine)	Jamb Leaf Screw Size (Wood)
5	127	0.190	9	2 x 1/4-20 FH	1/2 x 1/4-20 FH

