

# INSTALLATION INSTRUCTIONS

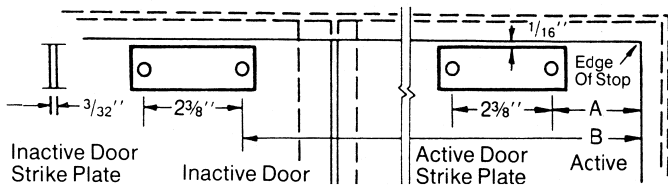
**IMPORTANT: INSTALL COORDINATOR BEFORE ANY OTHER HARDWARE EXCEPT HINGES.**



- Close door against stop.** Locate active and inactive door strikes as shown in Figure 1 and dimension chart.
  - Locate coordinator as shown in Figures 2 and 4.** Drill mounting hole with #10 drill. Install 12-24 thread forming screw to hold coordinator in correct position before drilling other holes.
  - Filler pieces** (see Figure 3) 297F are used to completely fill opening between end of coordinator and face of inactive door stop.
  - 297C Carry-Open-Bar** is available. See Figure 6. Locate holes as shown on inactive door. Drill 3/8" holes for sex bolts.
  - Mounting brackets 297M and 297N for stop applied hardware** may be supplied. See Figures 8 and 9. Position center line of bracket or brackets to coincide with center line of stop applied hardware according to manufacturer's template. Mount brackets. Drill and tap brackets for stop applied hardware per manufacturer's template.
- NOTE:** Install and adjust door closing devices for desired closing speeds. Pre-set tension on Lever Torsion Spring holds active door open until trigger is depressed by closing of inactive door. If active door over-rides Lever before trigger is depressed increase tension as shown in Figure 7.

FIG. 1

ACTIVE AND INACTIVE DOOR STRIKE PLATES



LENGTH OF HOUSING	DIMENSIONS IN INCHES									
	A	B	C	D	E	F	G	H	I	J DIMENSION
32"	1 1/4"	27 1/2"	3/8"	4"	3/4"	Omit	Omit	31"	32"	VARIES PER K DIMENSION
42"	1 1/4"	37 1/2"	3/8"	4"	3/4"	Omit	Omit	41"	42"	
52"	1 1/4"	47 1/2"	3/8"	4"	3/4"	27 3/8"	24 3/8"	51"	52"	
60"	1 1/4"	55 1/2"	3/8"	4"	3/4"	27 3/8"	32 3/8"	59"	60"	
66"	1 1/4"	61 1/2"	3/8"	4"	3/4"	27 3/8"	38 3/8"	65"	66"	

FIG. 2

297D COORDINATOR WITH DOORS IN CLOSED POSITION

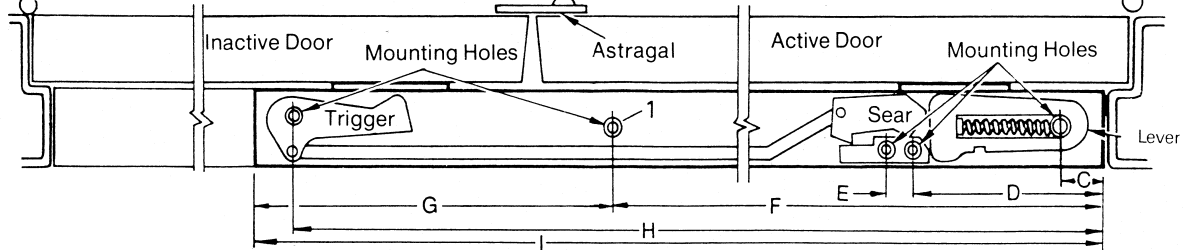


FIG. 3

297D COORDINATOR WITH 297F FILLER PLATE. DOORS IN OPEN POSITION

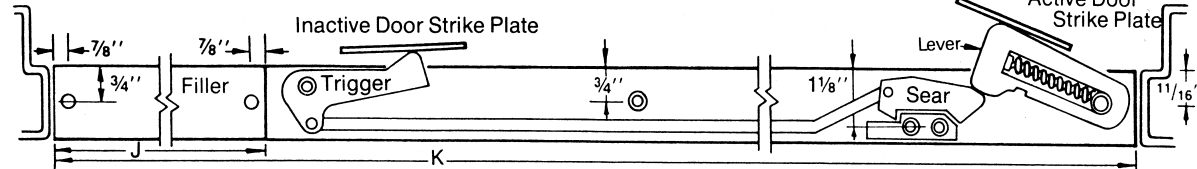


FIG. 4

DOORS IN CLOSED POSITION

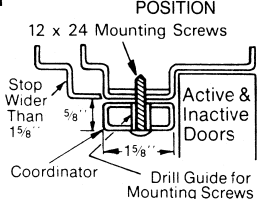


FIG. 5

DOORS IN OPEN POSITION, LEVER AND TRIGGER PROJECTION

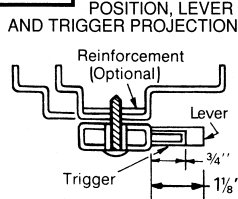


FIG. 6

297C CARRY-OPEN BAR

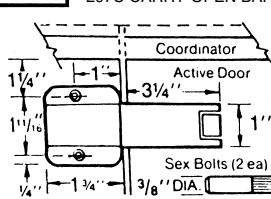


FIG. 7

LEVER SPRING ADJUSTMENT FEATURE

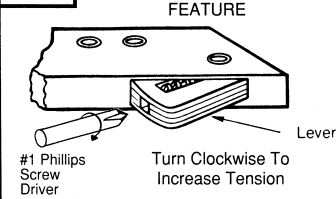


FIG. 8

297M MOUNTING BRACKET FOR STOP WIDTHS 7/8" TO 2-1/4"

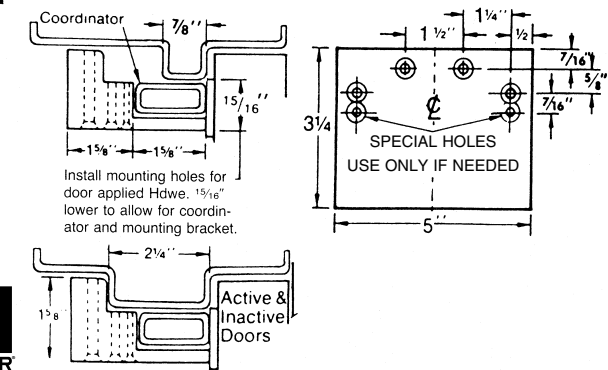
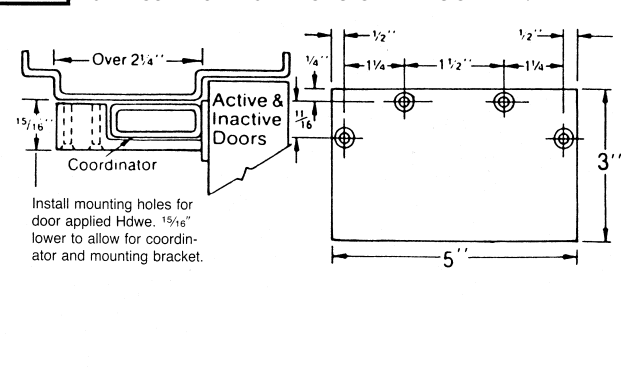


FIG. 9

297N MOUNTING BRACKET FOR STOP WIDTHS OVER 2-1/4"



HAGER RESERVES THE RIGHT TO MAKE DESIGN CHANGES WITHOUT NOTICE. CALL HAGER ENGINEERING AT 1-800-325-9995 FOR LATEST REVISION DATE OF TEMPLATE.

No.	Rev.	By	Date
1	TA03073	HTB	8/4/03