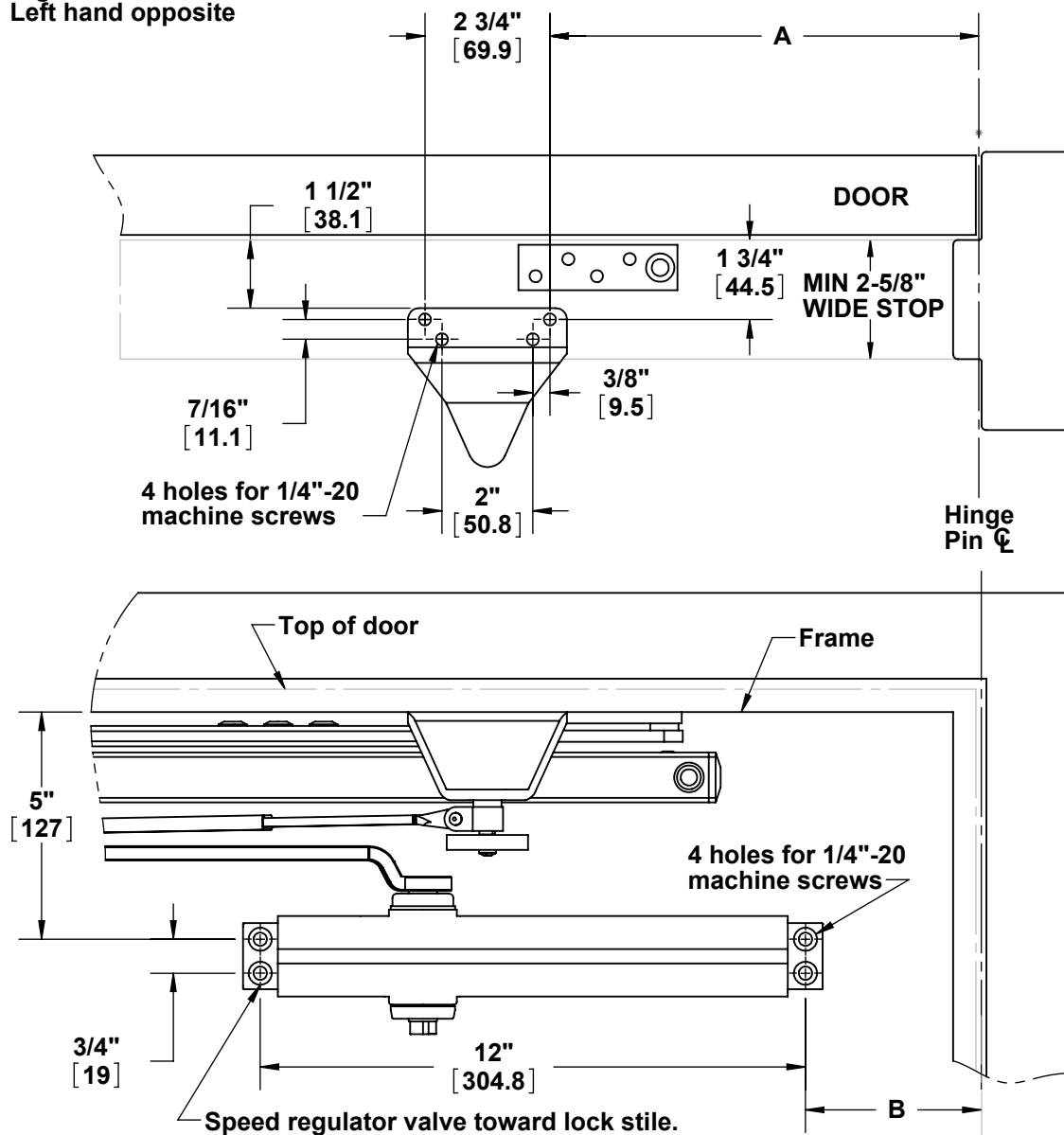
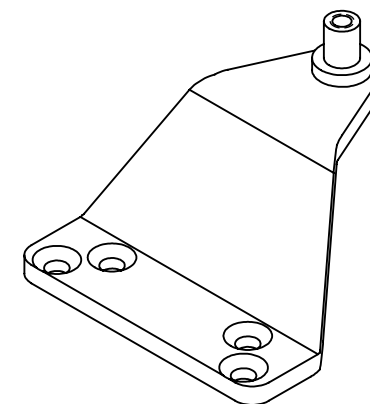


Right hand shown  
Left hand opposite



REV.	DESCRIPTION	ECO NO.	DATE
01	ORIGINAL RELEASE		2/9/2010
02	ADDED NOTE		11/10/2011



**NOTE:**  
MINIMUM TOP RAIL CLEARANCE IS 8-1/4"

Screw pack contains:  
4 pcs 1/4" x 1-1/2" self-taping self-drilling flat head wood screw  
4 pcs 1/4"-20 x 1-1/2" self-taping self-drilling flat head metals screw

Opening	Dimension 'A'	Dimension 'B'
UP to 120°	9-1/2" (241mm)	3-3/4" (95mm)
120° to 180°	7" (178mm)*	1-1/4" (32mm)

\* Door/Wall/Hardware/Jamb condintions permitting.

Reference 5200 closer instructions  
for further closer installation detail.



**PROPRIETARY & CONFIDENTIAL**  
THE INFORMATION CONTAINED  
IN THIS DRAWING IS THE SOLE  
PROPERTY OF HAGER  
COMPANIES. ANY REPRODUCTION  
IN PART OR AS A WHOLE WITHOUT  
THE WRITTEN PERMISSION OF  
HAGER COMPANIES IS PROHIBITED.

HAGER RESERVES  
THE RIGHT TO  
MAKE DESIGN  
CHANGES  
WITHOUT NOTICE.  
CALL HAGER  
ENGINEERING AT  
1-800-325-9995  
FOR THE LATEST  
REVISION DATE  
OF TEMPLATE.

	DRAWN	NJ	2/9/2010	5936 (5200 install) EXTRA CLEARANCE BRACKET		
	ENG. APPR.	-	-			
MATERIAL Material <not specified>	Q.A.					
FINISH -	TOLERANCES: FRACTIONAL: ±0.015" ANGULAR: MACH: ±1° BEND: ±1° TWO PLACE DECIMAL: ±0.01" THREE PLACE DECIMAL: ±0.004"			SIZE <b>A</b>	DWG. NO. <b>I-CL00274</b>	REV. <b>02</b>
DO NOT SCALE DRAWING				SCALE: 1:4	WEIGHT:	SHEET 1 OF 1